



# GMT MONTHLY MEMBERSHIP PROGRESS REPORT

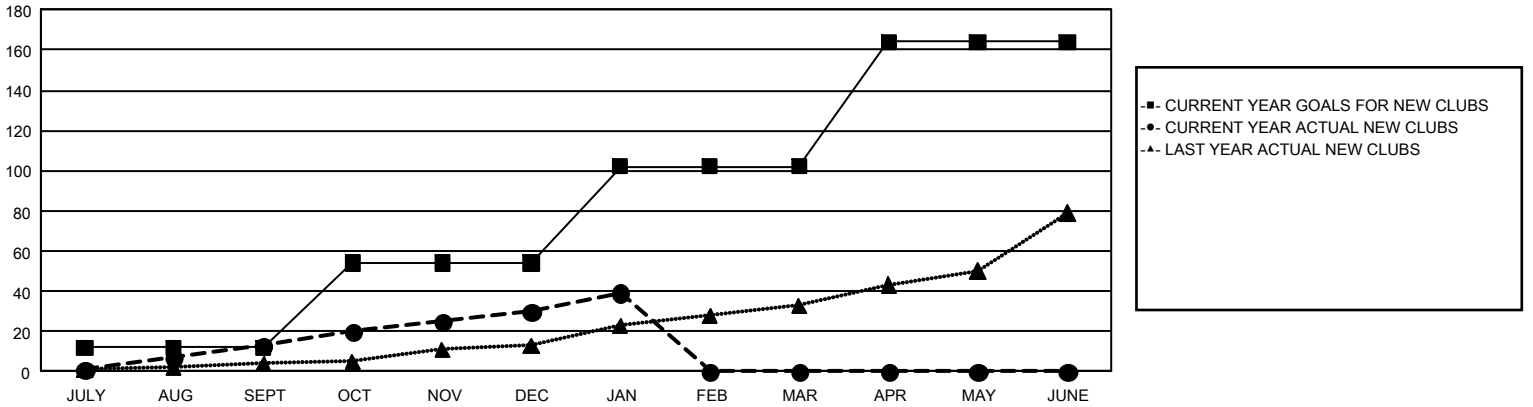
## GAT Constitutional Area 4

Results as of: 1/31/2024

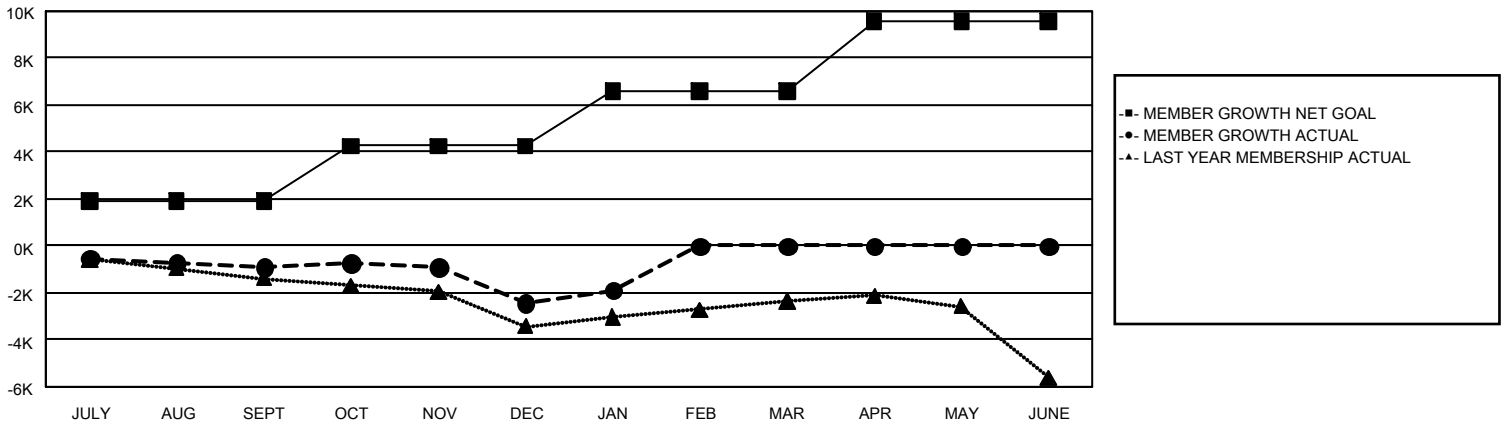
REPORT DOES NOT INCLUDE CLUBS IN UNDISTRICTED AREAS.

Clubs				Members			
RESULTS FOR 2023-2024				RESULTS FOR 2023-2024			
QUARTER	NEW CLUB GOAL	NEW CLUBS	DROPPED CLUBS	QUARTER	MEMBER GROWTH NET GOAL	MEMBER GROWTH ACTUAL	DROPPED MEMBERS ACTUAL (including transfers)
JULY/AUG/SEPT	12	13	56	JULY/AUG/SEPT	1,904	3,462	3,882
OCT/NOV/DEC	42	17	44	OCT/NOV/DEC	2,360	4,279	5,372
JAN/FEB/MAR	48	9	20	JAN/FEB/MAR	2,330	2,129	1,414
APR/MAY/JUNE	62	0	0	APR/MAY/JUNE	2,988	0	0

GOALS AND ACTUAL NEW CLUBS CUMULATIVE



GOALS AND ACTUAL MEMBERS CUMULATIVE



DROPPED CLUBS: 120	3,790 CLUBS OF 8,893 ADDED 1 OR MORE NEW MEMBERS	<b>GENDER DISTRIBUTION</b>
		MALE 164,377 (74.49%)
		FEMALE 56,265 (25.50%)
<b>DROPPED MEMBERS</b>	<a href="#">CLICK HERE FOR CUMULATIVE MEMBERSHIP DATA</a>	TOTAL FAMILY UNIT MEMBERS 11,149
DECEASED 1,382		FAMILY MEMBERS PAYING HALF DUES 5,743
CLUB CANCELLED 529		
OTHER 8,754		
<b>TOTAL 10,665</b>		